

ADM Cycle Iteration Approach

The **Iteration Approach** in TOGAF ADM allows organizations to adapt the architecture development process to their specific needs by revisiting phases and refining outputs iteratively. This ensures that the architecture evolves effectively and aligns with changing business priorities, complexities, and scales.

Analysing Current State

Why Changes are required

Business Needs



Organization Structure & Culture



Capacity & Process



Technology & Infrastructure



Policies



Business Architecture



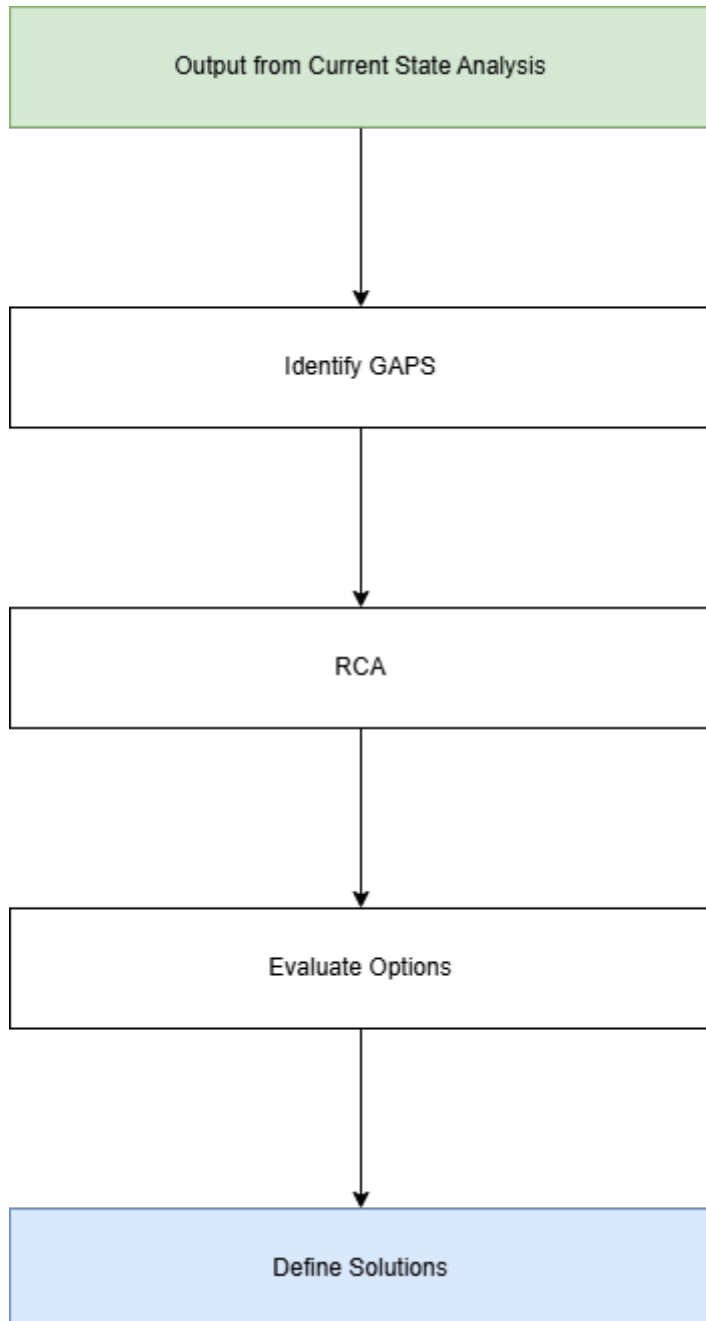
Internal Assests



External Influence



Functional Decomposition / Process Analysis



Define Future State

- Determine the set of necessary conditions for meeting business needs.
 - Business Value Matrix.
 - SWOT analysis.
 - Benchmarking & Market Research.

Template:

Business Value Matrix.xls

Revision #2

Created 25 November 2024 15:31:20 by Admin

Updated 25 November 2024 15:47:49 by Admin